

Pneumatic control switch new version

N-Gage
MULTI PURPOSE PNEUMATIC SWITCH

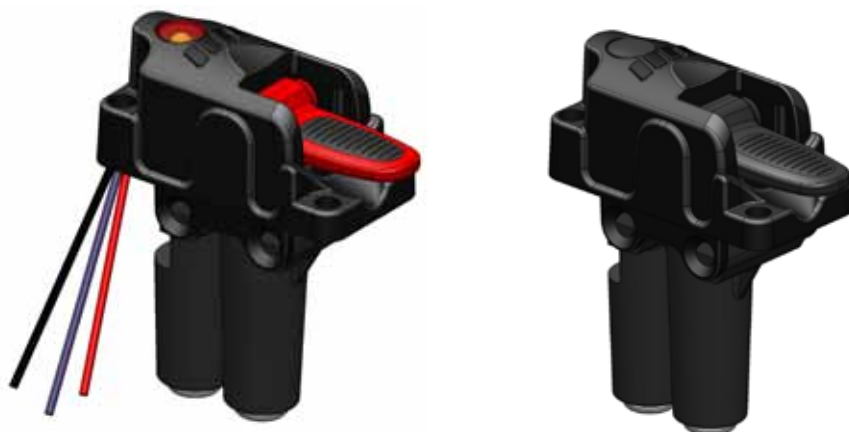
We are glad to inform you that **NGAGE3**, the new version of pneumatic control switch N-GAGE is now available in the following models:

100-001-00515:

With warning light

100-001-00524:

Without warning light

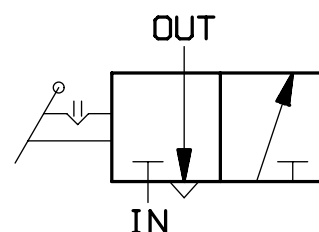


New:

- injection printed body made of high resistance plastic material
- integrated air inlets for 6 pipe
- electric wiring for warning light and third cable for auxiliary outside control

Technical features:

- pneumatic control switch 3/2
- max. pressure 12 bar
- in-built switch and warning light for operating control (available only for version 100-001-00515)



As the previous version, we remind you that the new control switch N-GAGE can be used in modular configuration with N-FORCE controls.



OUTSIDE ELECTRIC LOADINGS CONNECTION

The electric wiring of N-FORCE and N-GAGE pneumatic control switches requires the power supply with positive and negative to operate the inside LED (red and black cables) and a purple cable to be used in case an auxiliary control is required.

Connect the led to a supply of max 24V. Inside LED consumption 20mA. The red cable should be connected to positive while the black one to negative.

It's possible to connect auxiliary loadings using the purple cable as per attached electric diagram.

Max load: 12V 2A
 24V 1A

Purple cable should be isolated when not in use.

